



Department of
Psychology

Undergraduate studies in

Psychology

Contents

Welcome	p.1
Our courses	p.2
Resources and facilities	p.14
Studying through the medium of Welsh	p.16
Employability	p.16
Year in Industry	p.16
Student Profiles	p.18
Global opportunities	p.20
Departmental Research	p.22
Psychology Society	p.23
How to apply	p.24



Important information

The programme information published in this brochure was correct at time of going to print (December 2023) and may be subject to change. Prospective students are advised to check the definitive programme information, including entry requirements, that is available on our website before making an application, to ensure that the programme meets their needs.

Welcome

Welcome to the Department of Psychology, here at Aberystwyth University, where we use our knowledge and enthusiasm for Psychology to offer you excellent teaching by some of the best researchers in their fields. We are rated Top 5 in the UK for Teaching Quality in Psychology (Good University Guide, The Times and Sunday Times 2024).

In a location of outstanding beauty, and with the close community relationship between the department's staff and our students, we continue to grow in size and stature. With high levels of student satisfaction, year-on-year, we delight in seeing our students learn, challenge and grow into the Psychologists of tomorrow. We provide an excellent learning environment for both your academic and personal development, alongside opportunities for a year studying abroad or a year working in industry.

Aberystwyth lies on the shores of Cardigan Bay on the west coast of Wales, set in stunning natural surroundings. The locality offers a fine coastline with expanses of rolling moorland and wooded valleys immediately inland.

What you study is also important and at Aberystwyth we are proud that all of our courses are accredited by the British Psychological Society - a mark of quality widely acknowledged by employers in the professional field and which grants the opportunity for graduates to gain graduate and/or chartered membership of the society.

The flexibility of being able to select from a range of diverse modules means you can tailor your learning to your interests.

Further information about our courses and other opportunities can be found in this booklet. Why not join us on an Open Day, Online Open Day or Applicant Visiting Day to see for yourself what makes Aberystwyth such an incredible place to study.

Prof. Nigel Holt
Head of Department



Our courses

Single Honours

Psychology	p.3
Psychology and Criminology	p.4
Psychology and Education	p.6
Psychology and Marketing	p.8
Psychology and Sociology	p.10
Psychology with Counselling	p.11
Psychology with Forensic Psychology	p.12
Joint Honours	p.13

Psychology

BSc (Hons) | C800 | 3 years

Our Psychology degree is accredited by the British Psychological Society and is designed to develop and shape your understanding of the mind and human behaviour. Our ethos is to teach in a way which enables you to develop conceptual and theoretical knowledge to solve problems in real-world scenarios. The course is built around essential core topics in psychology, which serve as the basis for the varied and specialised optional modules we offer in the second and third year.

Our laboratories and research spaces provide you with an array of facilities and equipment to explore. These resources allow you to develop your interests, and engage in creative problem-solving techniques as you progress through your degree.

You will benefit from:


- a wide range of expertise among our research-active staff
- eye tracking, an electroencephalogram (EEG), physiological measurement equipment and behavioural measurements equipment
- a focus on applying psychology
- studying a course fully accredited by the British Psychological Society
- the ability to study abroad or work in industry on a placement as part of your degree
- studying in a department with an exceptional track record for student employability.

Employability

A degree in Psychology from Aberystwyth University will prepare you for a range of careers, and access to wide range of further training opportunities including clinical, educational, occupational, sports and exercise psychology; psychotherapy and counselling; social work; health care; human resources; careers advisory service; marketing, publishing and advertising.

Key Facts

 **Typical offer:**
UCAS tariff points: 120-96
IB: 30-26.

 **Assessment weighting:** 40-60% coursework and 60-40% exams.

 **Field trips/fieldwork:** No.



Module list

Below is an indicative list of modules that you may study on this course.

First year:

- Applications of Psychology
- Brain, Behaviour and Cognition
- Conceptual and Historical Issues in Psychology
- Designing Psychological Research Projects
- Introduction to Research Methods in Psychology *
- Introduction to Core Topics in Social and Individual Behaviour
- Personal Development and Organisational Behaviour.

Second year:

- Cognitive Psychology
- Qualitative Research Methods
- Quantitative Research Methods *
- Social Psychology.

Final year:


- Behavioural Neuroscience
- Developmental Psychology and Individual Differences
- Psychology Research Project *.

Optional modules you may select to develop your specialist interests include:

- Forensic Psychology
- Evolutionary Psychology
- Drugs and Behaviour
- Psychology of Humour
- Health Psychology *
- Issues in Clinical Psychology
- Psychology of Language.

For more details on the optional modules available, see the current list on our website, or contact us.

* also available partially or entirely through the medium of Welsh.

 **Also available:**
WF7F Integrated year in industry.
N1FW Integrated year studying abroad.
C80F Integrated foundation year.

Psychology and Criminology

BSc (Hons) | CM89 | 3 years

Psychology and Criminology are closely aligned subjects that combine effectively so that you can benefit from the theoretical perspectives of crime with sociology, philosophy and psychology on this joint honours degree.

You will study why people commit crime and the social cultural repercussions of crime, with close reference to the psychological mind to gain and develop the crucial skills needed to enter this field of work. This British Psychological Society accredited degree is also available with a year in industry, which would give you the opportunity to gain new skills, network with potential employers and develop the expertise needed to work in competitive industries.

You will benefit from:


- studying in a supportive, student-focused environment - our academic, support and technical staff are here for you every step of the way
- being able to draw on the expertise of research-active staff across two departments
- an innovative approach to learning and teaching - the Department houses modern and innovative research facilities and top-class student learning spaces.

Employability

Our BSc Psychology and Criminology degree is an excellent foundation if you are considering a career in the social and youth work professions, and will also provide specialist skills and knowledge relevant to a career in a criminal justice setting (eg police, probation or prison service). Our graduates have followed other career options including clinical, educational, occupational, sports and exercise psychology; psychotherapy and counselling; social work; health care; human resources; careers advisory service; marketing; publishing and advertising.

Key Facts

 **Typical offer:**
UCAS tariff points: 120-96
IB: 30-26.

 **Assessment weighting:** 40-60% coursework and 60-40% exams.

 **Field trips/fieldwork:** No.



Module list

Below is an indicative list of modules that you may study on this course.

First year:

- Brain, Behaviour and Cognition
- Crime, Control and Prevention *
- Introduction to Criminology *
- Legal and Justice Systems *
- Introduction to Research Methods in Psychology *
- Introduction to Core Topics in Social and Individual Behaviour.

Second year:

- Cognitive Psychology
- Qualitative Research Methods
- Quantitative Research Methods *
- Social Psychology.

Final year:


- Behavioural Neuroscience
- Developmental Psychology and Individual Differences
- Psychology Research Project *.

Optional modules you may select to develop your specialist interests include:

- Contemporary Issues in Criminology
- Crime & Punishment in Historical Perspective
- Criminal Law
- Critical Perspectives on Imprisonment
- Drugs and Crime
- Police, Policing and Society
- Principles of Evidence
- Psychological Explanations of Criminal Behaviour
- Psychology and Crime
- Treatment and Rehabilitation of Offenders
- Youth Justice.

For more details on the optional modules available, see the current list on our website, or contact us.

* also available partially or entirely through the medium of Welsh.

 **Also available:**
A1C6 Integrated year in industry.



Psychology and Education

BSc (Hons) | CX80 | 3 years

This joint honours degree in Psychology and Education, accredited by the British Psychological Society (BPS), offers you the opportunity to pursue a specialist field of study, where insights from one discipline can directly enhance understanding and application of knowledge in the other.

Studying this degree will enable you to develop a deeper understanding of cognitive and social development in human beings from childhood onwards. You will also have the opportunity to study and critique the learning environments in which this development takes place and how these are influenced by educational policy and practice.

Also, as long as you meet the entry requirements, you will be guaranteed an interview for Primary PGCE at Aberystwyth.

You will benefit from:

- being part of two departments, the Department of Psychology and the School of Education
- an innovative approach to learning and teaching with support from staff with active research interests
- modern in-house research facilities and student learning spaces.

Please note: A Disclosure and Barring Service (DBS) certificate or equivalent check may be necessary in order to undertake some modules.

Employability

A degree in Psychology and Education from Aberystwyth University will prepare you for a range of careers, and access to a wide range of further training opportunities including clinical, educational, occupational, sports and exercise psychology; psychotherapy and counselling; social work; health care; human resources; careers advisory service; marketing; publishing and advertising.

Key Facts



Typical offer:
UCAS tariff points: 120-96
IB: 30-26.



Assessment weighting: 70-80% coursework
and 20-30% exams.



Field trips/fieldwork: No.



Module list

Below is an indicative list of modules that you may study on this course.

First year:

- Brain, Behaviour and Cognition
- Introduction to Research Methods in Psychology *
- Introduction to Core Topics in Social and Individual Behaviour
- Children's Development and Learning *
- The Learner and the Learning Environment *.

Second year:

- Cognitive Psychology
- Psychology of Learning and Thinking *
- Qualitative Research Methods
- Quantitative Research Methods *
- Social Psychology.

Final year:

- Behavioural Neuroscience
- Critically Reflecting and Evaluating Learning and Skills *
- Developmental Psychology
- Psychology Research Project for Joint Honours*.

Optional modules you may select to develop your specialist interests include:

- Children's Rights
- Communication
- Emotional and Social Development
- Mathematical Development in the Early Years
- Special Educational Needs.

For more details on the optional modules available, see the current list on our website, or contact us.

* also available partially or entirely through the medium of Welsh.



Psychology and Marketing

BSc (Hons) | NC58 | 3 years

The BSc Psychology and Marketing degree will enable you to explore consumer behaviour and how people decide what to buy; how marketing strategies can influence the relationship between the consumer and business; and how social media mediates a change in digital consumer behaviour.

Throughout the course your exploration of human behaviour and consumption from a psychology perspective will underpin your competence as a prospective marketer, and will complement your growing knowledge of marketing tools, theories and concepts. Completing a market research project with real-world clients will allow you to put the theory you have learned into practice and strengthen your professional consulting abilities.

You will benefit from:

- a wide range of expertise among our research-active staff
- access to eye tracking, an electroencephalogram (EEG), physiological measurement equipment and behavioural measurements equipment
- studying a degree accredited by the British Psychological Society and Chartered Institute of Marketing
- a multidisciplinary understanding of marketing which employers increasingly demand.

Employability

A degree in Psychology and Marketing will provide an excellent foundation for a professional career in marketing. Many of our graduates have explored varied career aspirations including brand management; digital marketing; market research; communications and social media management; media planning and advertising; corporate marketing communications, as well as consumer behaviour analysis.

Key Facts



Typical offer:
UCAS tariff points: 120-96
IB: 30-26.



Assessment weighting:
60% coursework, 40% exams.



Field trips/fieldwork: No.



Module list

Below is an indicative list of modules that you may study on this course.

First year:

- Brain, Behaviour and Cognition
- Fundamentals of Management and Business
- Introduction to Core Topics in Social and Individual Behaviour
- Introduction to Research Methods in Psychology *
- Marketing Principles and Contemporary Practice.

Second year:

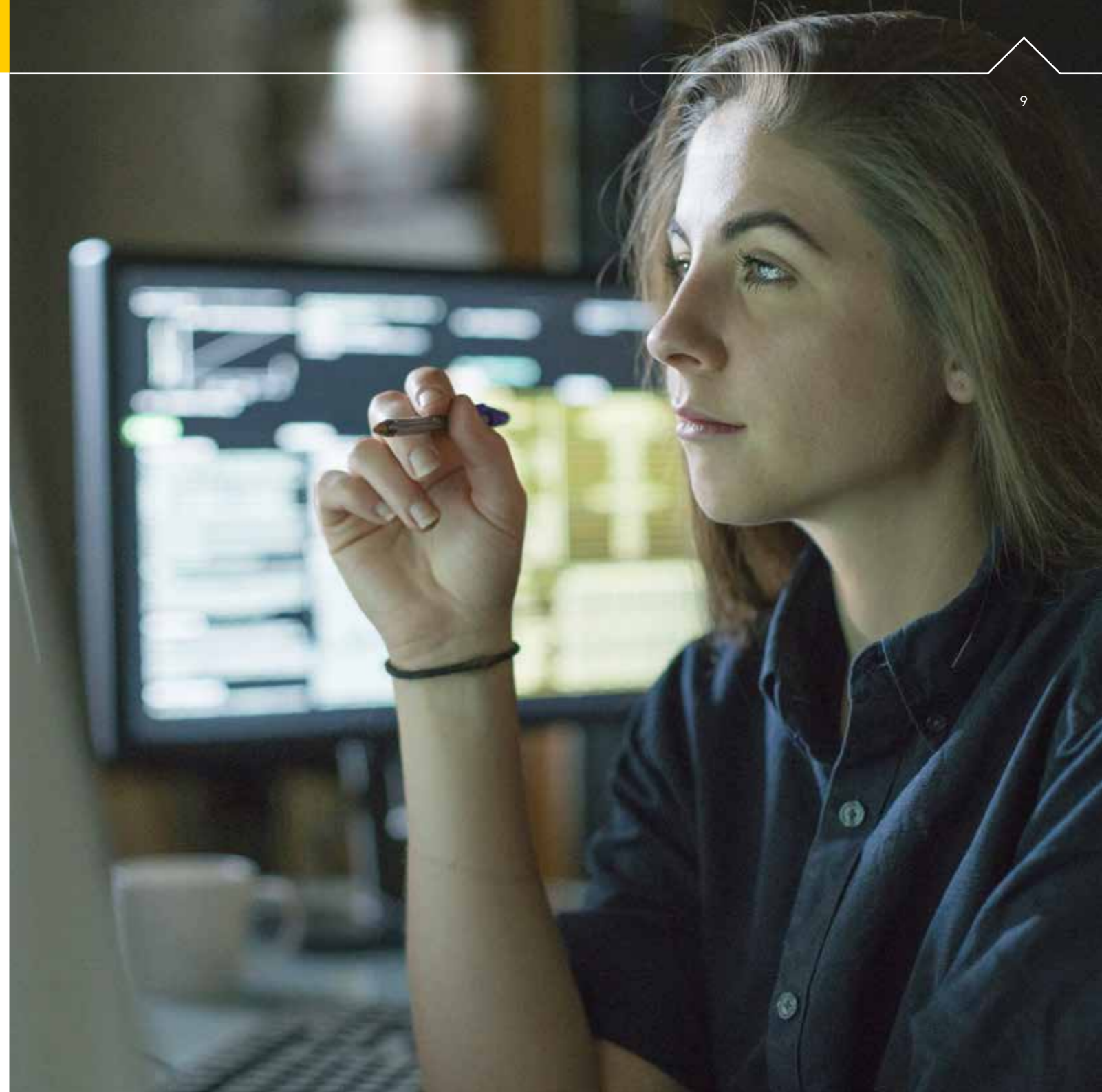
- Cognitive Psychology
- Consumer and Buyer Behaviour
- Marketing Management
- Qualitative Research Methods
- Quantitative Research Methods *
- Social Psychology.

Final year:

- Behavioural Neuroscience
- Developmental Psychology
- Digital Marketing
- Marketing and Digital Marketing Communication
- Psychology Research Project.

For more details on the optional modules available, see the current list on our website, or contact us.

* also available partially or entirely through the medium of Welsh.



Psychology and Sociology

BSc (Hons) | LC38 | 3 years

The Psychology and Sociology degree will enable you to engage with psychological theory and research and explore how psychology is applied to real-world personal and social issues. The course will also enable you to explore both the personal and social nature of human experience from different perspectives.

On this degree you will learn how to critically evaluate ideas, concepts and approaches across the whole of the subject areas and within particular branches of Psychology and Sociology. The course will also draw attention to the connections between human behaviour and the wider social systems (including communities, cities and nations) within which we live. You will learn how to conduct independent research and will become acquainted with a range of qualitative and quantitative methods, digital data sources, and modes of data collection, analysis and presentation. You will also learn how to apply the key concepts associated with psychology and sociology in real-world situations and develop your employability skills.

You will benefit from:

- a wide range of expertise among our research-active staff
- access to eye tracking, an electroencephalogram (EEG), physiological measurement equipment and behavioural measurements equipment
- a range of practical classes and fieldwork exercises in both disciplines
- learning from live research projects that enable you to encounter cutting-edge theoretical and empirical understandings of the social world.

Employability

The study of Psychology and Sociology provides a solid foundation for you to consider a wide range of careers including the media, social work, international development, community engagement and the Civil Service, to name a few.

Our graduates have progressed on to careers in the Police force; health and social care; social work; social policy (including public housing, social work, local government administration and the voluntary sector); management; journalism; public relations; teaching and research.

Module list

Below is an indicative list of modules that you may study on this course.

First year:

- Brain, Behaviour and Cognition
- Introduction to Core Topics in Social and Individual Behaviour
- Introduction to Research Methods in Psychology *
- Key Concepts in Sociology
- Place and Identity
- Understanding Sameness and Difference.

Second year:

- Cognitive Psychology
- Introduction to Social Theory
- Qualitative Research Methods
- Quantitative Research Methods *
- Social Psychology
- Understanding (in)equality and (in)justice.

Final year:

- Behavioural Neuroscience
- Developmental Psychology
- Psychology Research Project
- Everyday Social Worlds.

See our website for the optional modules you may select to develop your specialist interests.

* also available partially or entirely through the medium of Welsh.

Key Facts



Typical offer:
UCAS tariff points: 120-96
IB: 30-26.



Assessment weighting: 40% coursework, 60% exams.



Field trips/fieldwork: No.

Psychology with Counselling



BSc (Hons) | C843 | 3 years

The Psychology with Counselling degree combines the study of core psychological concepts with elements of counselling-related knowledge and skills, to develop your understanding of human behaviour and approaches to providing psychological help through counselling.

The degree provides you with flexible and highly desirable skills with which to enter the workplace. It is also an ideal stepping stone towards careers within counselling, psychotherapy, clinical psychology and health psychology. Please note that this degree will not qualify you as a counselling practitioner.

Our facilities are designed to provide you with as much practical experience as possible, and include labs fitted with cameras and microphones. Assessments emphasise the practical elements of the course, giving you a taste of what it is actually like to be a therapeutic practitioner.

You will benefit from:

- studying a degree accredited by the British Psychological Society (BPS)
- experiential learning in small groups, linking theory to practice on an on-going basis
- being taught by chartered psychologists and practising counsellors/psychotherapists, ensuring the theoretical and practical relevance of your student experience
- facilities with observation and interview rooms equipped with camera and audio, allowing for research, interview and counselling skills practice sessions to be conducted and recorded.

Employability

Our BSc Psychology with Counselling is an excellent foundation if you are considering a career in the social care or helping professions. The BPS accreditation will enable access to postgraduate and professional training in clinical and counselling psychology. Our Psychology graduates have progressed to a wide range of careers which include clinical, educational, occupational, sports and exercise psychology; psychotherapy and counselling; social work; health care; human resources; careers advisory service; marketing; publishing and advertising.

Key Facts



Typical offer:
UCAS tariff points: 120-96
IB: 30-26.



Assessment weighting: 40-60% coursework and 60-40% exams.



Field trips/fieldwork: No.

Module list

Below is an indicative list of modules that you may study on this course.

First year:

- Brain, Behaviour and Cognition
- Conceptual and Historical Issues in Psychology
- Introduction to Research Methods in Psychology *
- Introduction to Core Topics in Social and Individual Behaviour
- Personal Development and Organisational Behaviour
- Foundations of Counselling: Skills and Theory I.

Second year:

- Cognitive Psychology
- Qualitative Research Methods
- Quantitative Research Methods *
- Social Psychology
- Issues in Clinical Psychology
- Health Psychology *
- Foundations of Counselling: Skills and Theory II.

Final year:

- Behavioural Neuroscience
- Developmental Psychology and Individual Differences
- Counselling-focused Psychology Research Project.

See our website for the optional modules you may select to develop your specialist interests.

* also available partially or entirely through the medium of Welsh.



Also available:
Integrated year in industry
*subject to approval

Psychology with Forensic Psychology

BSc (Hons) | C802 | 3 years

The Psychology with Forensic Psychology degree offers insights into critical areas of this applied area of psychology, including understanding criminal development and behaviour, courtroom dynamics and offender profiling. Professional qualifications often require a firm grounding in the background to forensic psychology, and this BPS accredited undergraduate pathway is a building block to later postgraduate study, an advantage for those considering Forensic Doctorates and Chartered Forensic Psychology status.

Studying Psychology with Forensic Psychology will allow exploration of key concepts and applied research through dedicated modules and supervised forensic-themed final year projects. You will study forensic psychology along with additional allied modules, such as Drugs and Behaviour and a forensic-themed dissertation. Many staff in the department conduct research in forensic settings, and include funded projects with the Youth Justice Board, Police and Home Office, in topics such as serious and organised crime, restorative justice and cybercrime.

You will benefit from:

- a wide range of expertise among research-active staff
- a focus on applying psychology to forensic contexts
- studying a course fully accredited by the British Psychological Society.

Employability

The main employer of forensic psychologists is HM Prison Service. However, there are also opportunities in the broader criminal justice field and elsewhere, including the Home Office, NHS (in special hospitals and rehabilitation units, local forensic services and secure hospitals), the police, social services, research, lecturing and private consultancy.

Key Facts

Typical offer:
UCAS tariff points: 120-96
IB: 30-26.

Assessment weighting: 40-60% coursework and 60-40% exams.

Field trips/fieldwork: No.



Module list

Below is an indicative list of modules that you may study on this course.

First year:

- Introduction to Core Topics in Social and Individual Behaviour
- Introduction to Research Methods in Psychology *
- Brain, Behaviour and Cognition
- Personal Development and Organisational Behaviour
- Designing Psychological Research Projects
- Introduction to Forensic Psychology
- Conceptual and Historical Issues in Psychology.

Second year:

- Cognitive Psychology
- Qualitative Research Methods
- Social Psychology
- Applied Forensic Psychology
- Quantitative Research Methods.

Final year:

- Behavioural Neuroscience
- Developmental Psychology
- Drugs and Behaviour
- Forensic Psychology Dissertation.

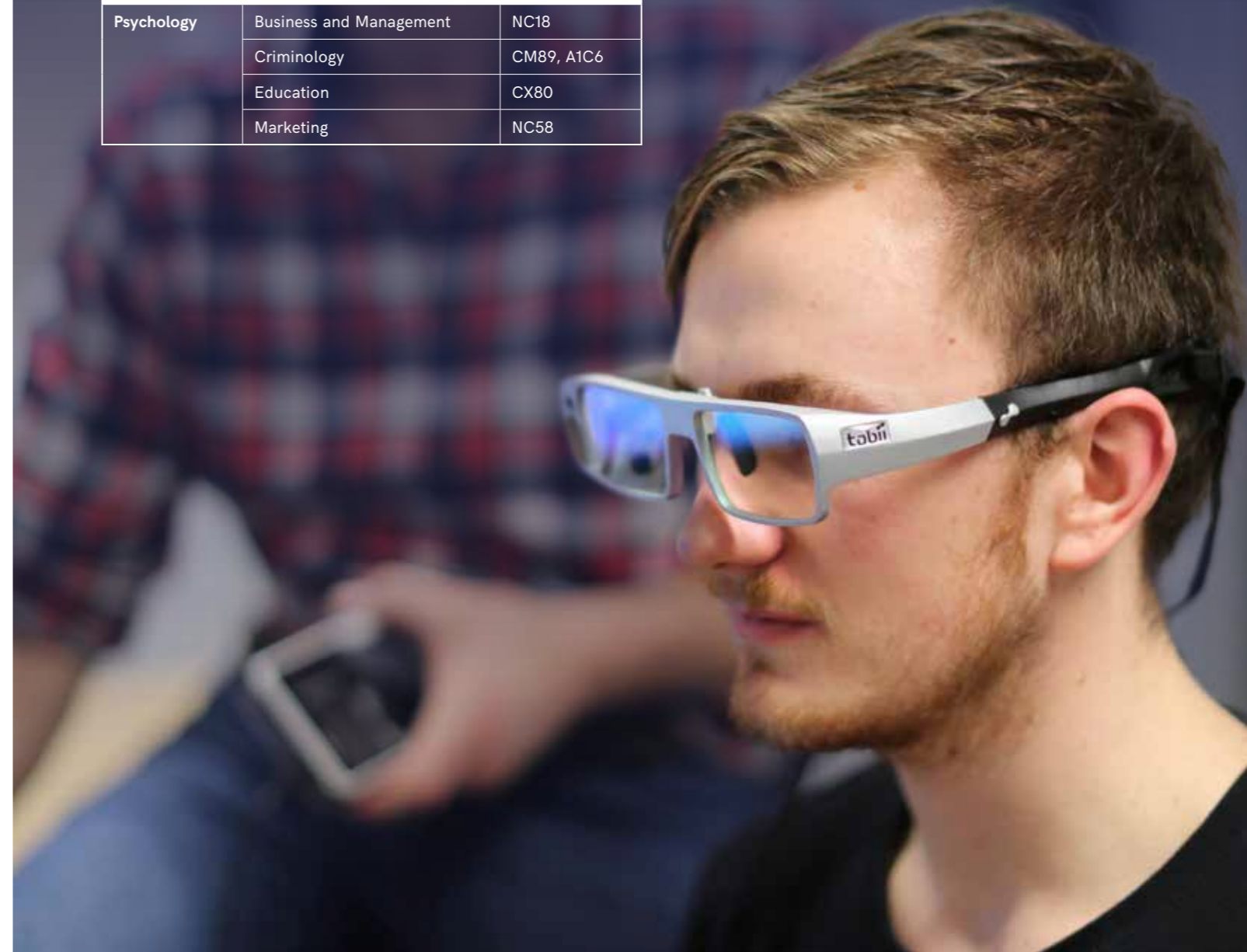
For more details on the optional modules available, see the current list on our website, or contact us.

* also available partially or entirely through the medium of Welsh.

Also available:
C803 Integrated year in industry.

Joint Honours

Subject	Available with...	Joint Honours
Psychology	Business and Management	NC18
	Criminology	CM89, A1C6
	Education	CX80
	Marketing	NC58



Resources and facilities

Admin support: for all queries, big and small

Library resources: access to online and offline psychology learning resources, books and journals

Career guidance: receive help and advice at each stage of your career planning journey with departmental talks, workshops and drop-in sessions

Technology, equipment and rooms:

- **Excellent biophysiological research equipment** - BioPac System
- **State-of-the-art eye tracking equipment** - Tobii System
- **Brain activity recordings** - 64 Channel EEG System
- **Behavioural observation using cameras** - Video Control System and Video Editing Suite
- **Run experiments with sound in a controlled environment** - Sound-Attenuated Chamber
- **Perform psychometric tests on language in a child-friendly environment** - Child Development Lab
- **Comfortable lab space with fixed recording system** - Interviews and Group Discussions
- **Quiet space to write up recordings with Olympus transcription** - Transcription Room
- **Prepare food for taste and smell experiments in our Bio-Kitchen** - Food Preparation Space
- **Spaces for computer-based research or quiet study** - Research Cubicles



Study through the medium of Welsh

We are pleased to offer a number of modules that can be studied partially or entirely through the medium of Welsh. Students at Aberystwyth may also choose to submit any piece of coursework through the medium of Welsh and can have a Welsh-speaking tutor.

Employability

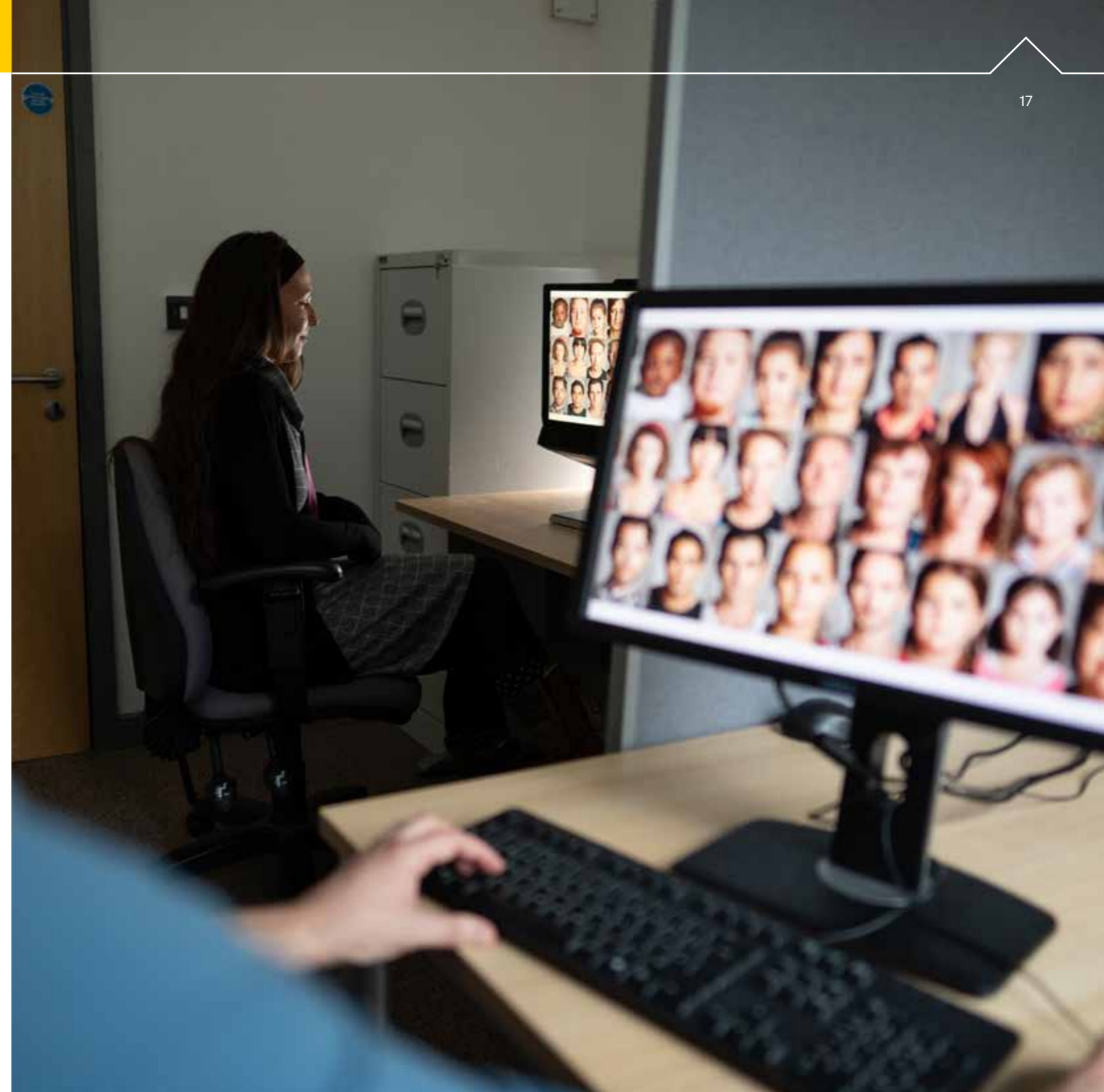
Our Psychology degree schemes will prepare you for a range of careers, ensuring you are equipped with the transferrable skills that are required in the workplace. All our degree schemes can also provide a stepping stone to further study opportunities - Masters or PhD - if that is your preference.

The Department of Psychology has excellent figures for graduate employability or further study, with leavers entering into specialist fields such as Clinical, Educational, Occupational and Sports & Exercise Psychology. Other areas include Psychotherapy, Counselling, Social work and Healthcare. Further opportunities are available for our psychology graduates in a wide variety of industries such as Advertising/marketing, Banking and insurance, Business management, Charity work, Education, Health-related fields, Local and national government, Market research, Media Administration, Politics, Retail and sales, Survey writing, Teaching, Therapy, and Tourism.

Year in industry

Our four-year degrees with an integrated year in industry (available in Psychology, Psychology and Criminology or Psychology with Forensic Psychology) offer a great opportunity to enhance your CV with first-hand experience and also reflect upon the career path you would like to pursue after graduating. By putting theory into practice it will help bring to life what you have already learned on your course, and will allow you to gain valuable experience in the workplace, improving your career prospects after university. The year in industry takes place during your third year, after which you will return to Aberystwyth to complete your degree in your fourth year.

Year in industry placements can be held in a range of sectors including health, education, forensic, government and business. Placements take place across the UK (and further afield) but our local volunteering partners include: Hywel Dda University Health Board, Ysgol Llwyn yr Eos Primary School, Ceredigion Youth Justice and Offending Service and a range of local charities.



Student profiles

Simona

Psychology (C800)

"I studied Psychology BSc at Aberystwyth University and I loved every second of it. It is a great University, the teaching quality is at a very high standard and the lecturers enjoy teaching their modules. I also had help with finding a good volunteering experience which gave me a great start when looking for a job. After I graduated, I went straight into doing my master's degree in Clinical and Health Psychology, where I graduated with a distinction. Now I am working as a full-time support worker helping people to acquire new skills which will allow them to be more independent and live their life with dignity. Also, I have a part-time job as a psychology lecturer in a Japanese centre preparing Japanese students for university. My experience in Aberystwyth has definitely prepared me for my further education and career by giving me all the knowledge and practical skills that I needed."

Samjhana

Psychology, with integrated year in industry (WF7F)

"My Year-in-Industry placement was with Bedfordshire Police in the Continuous Improvement Department. My project work exposed me to areas across the force, completing attachments with different departments to learn more about what they do. This first-hand experience of working in the Police has been an incredible learning experience, supporting me to improve and develop skills to help after university, and has encouraged me to think more about what interests me and what I would like to do in the future."

Conor

Psychology, with integrated year studying abroad (N1FW)

"At the University of Bergen in Western Norway, I was able to experience and immerse myself in a different culture and educational environment; enriching both my academic and personal life skills by providing me with an entirely unique and life-changing opportunity in an exciting and beautiful country."

Melisa

Psychology (C800)

Melisa Basol graduated with a BSc in Psychology from Aberystwyth University in July 2017 before going to Cambridge University to study for an MPhil. She started her PhD in Psychology at Pembroke College, Cambridge, in autumn 2018.

Melisa is one of 92 students who has taken up their scholarship after being selected from a total pool of 5,798 applicants. The Gates Cambridge Scholarships are award to the most academically exceptional and socially committed people from across the globe and is recognised as the University of Cambridge's most prestigious international postgraduate scholarship.

Melisa said: "I feel very honoured to be entering a community of like-minded and ambitious individuals who are determined to make an impact. And whilst this fund is incredibly prestigious and generous, I am aware that this would have not been possible without the trust and unconditional support of my department at Aber. My accomplishments are a mere reflection of the guidance and encouragement I have received throughout my undergraduate degree and beyond."



Camilla

Psychology (C800)

"After graduating I started to work as an assistant psychologist for a Clinical Psychologist in a private practice; this role gave me the opportunity to expand my knowledge in research, and in particular psychometric testing, and observe different therapeutic approaches. After this internship, I worked as an assistant Psychologist for an IAPT service, with CBT practitioners and Counselling Psychologists. I learnt about the importance of clinical assessments and the effectiveness of EMDR therapy (Eye Movement Desensitization and Reprocessing therapy) in reducing trauma. In September 2018, I started my Professional Doctorate in Counselling Psychology at Regents University and work as a trainee practitioner with clients recovering from alcohol and drugs addiction, at Edgware Community Hospital, London."

Lisa

Psychology (C800)

"I am employed by the Local Health Board to plan and commission substance misuse services and I was accepted to undertake a BSc in Psychology at Aberystwyth University. As I was working full time I studied on a part-time basis over several years. During this time I gained not only knowledge about my chosen subject but also skills that I have found extremely useful such as a better and more detailed understanding about data and statistics and an improvement of my own skills in research and presenting information. My dissertation topic was directly related to my work and was accepted as evidence in a regional substance misuse commissioning strategy which will be used to determine a direction of funding over a period of 3-5 years."

Global opportunities

Aberystwyth University offers an exciting range of options for you to go abroad while you are studying for your degree.

Our Global Opportunities team will help you to identify the best option for you.

Benefits of study and work abroad

- Boost your confidence
- Enhance your communication, intercultural and interpersonal skills
- Grow your adaptability and resilience
- Increase your openness to international opportunities
- Benefit your career.



Year or semester abroad

We offer a range of degrees which include an integrated year studying abroad at one of our partner universities in your third year. Language students will also spend their third year studying or working in the country of their language of study.

Students on most other degree courses can go abroad for a semester during their second year of study.

Work abroad during your industrial year

If you are studying a degree with an integrated industrial year, you can choose to spend all or part of the year working abroad, if your department approves it.

Short programmes

Spending even a short period of time overseas can give you a really valuable experience. We offer short periods of study, work or volunteering abroad, from three days to eight weeks.

Support

The Global Opportunities team will help prepare you for your overseas experience. Support includes:

- Pre-departure events to make sure that you know what to expect at your destination, and check you have all your travel paperwork in order. You will also learn how to make the most of your trip and how to access help if you need it.
- Return workshops co-hosted with the Careers Service will help you reflect on and integrate your experiences, helping you to consider how to include your experience abroad in job applications and conversations with future employers.

Funding

Funding is available to support eligible students with living and travel costs from UK and Welsh government schemes promoting study and work abroad.

The European Opportunities Fund, made possible by the very generous donation of a former student, is unique to Aberystwyth and provides financial help for short activities in the European Union.

Additional funding is available for students from disadvantaged groups.

Hong Kong



Budapest



Norway



Buenos Aires



Washington, DC



Research

County Lines - Protection for Vulnerable Young People in Wales

Dr Gareth Norris
(Senior Lecturer in Psychology)

Many people may have seen or heard coverage about 'County Lines' in the news. Dr Gareth Norris, from Aberystwyth University's Psychology Department, has recently submitted a report to the Home Office after evaluating an intervention with young people in Ceredigion, Wales, who are at risk of becoming involved in Serious and Organised Crime.

Despite the relatively low crime rate in Ceredigion, many vulnerable young people can be at risk of exploitation by drugs, gangs and other organised crime groups; this intervention was aimed at young people in school years 6 and 7 to provide them with the skills to recognise and resist potential victimisation.

Sessions included dealing with emotions, social media and internet safety, and substance misuse. The work formed part of one of the Department's Impact Case Studies for the Research Excellence Framework (REF, 2021) assessment exercise.

Dr Gwyn Griffith
(Left), Head of Youth
Justice at Ceredigion
County Council and
Dr Gareth Norris
from the Department
of Psychology at
Aberystwyth University.



Psychology Society

Social

Through the well-established student-led Psychology Society, our goal for our socials is to provide the perfect relaxed environment to meet and make friends with like-minded individuals. Our committee members are full of ideas, and our socials are typically held on Tuesdays. Each one is themed differently, and we will post an event on the Facebook group in advance in addition to emails to give everybody time to prepare! Tuesday Socials involve a wide varieties of activities, with new suggestions and newcomers always welcomed.

Academic

As a society we have very close ties to the Psychology department. As a result of this, we are able to host study groups around deadlines and exams, and often members of the department stop by to offer support. We also have a dedicated Facebook group full of helpful people who are more than happy to answer any questions you might have during the course of your studies!

How to apply

Once you've decided what course you want to study and where, you'll be able to start the university application process. Here's a brief overview of the process and our procedures here at Aberystwyth.

1 Apply through UCAS.com

Deadline 31 January. Aberystwyth University institution code: A40.

TOP TIP: You'll be given a 10-digit UCAS ID number. Keep this to hand as you'll be asked for it many times.

2 The University will consider your offer

TOP TIP: Use UCAS Hub to keep an eye on your application. At Aberystwyth we aim to make a decision within four weeks.

3 The offer will show on UCAS Hub

4 Decide where to go

Once you've received all your offers, you'll need to decide which university you want to go to, within a set time. This is when you'll need to note which universities will be your firm and insurance choices.

5 Accommodation

Once you've chosen your firm/insurance choice you'll be able to apply for your accommodation (April onwards).

6 Results day

UCAS Hub will confirm your offer of a place. If you're not clear what the offer is, contact the university directly. If you don't get the grades you've hoped for, you may want to consider entering Clearing.

7 Start packing!



Department of Psychology,
Penbryn 5,
Penglais Campus,
Aberystwyth University,
Ceredigion, SY23 3UX

- +44 (0) 1970 62 8444
- psychology@aber.ac.uk
- /PsychAtAber
- /psychataber
- @PsychAtAber

Designed and produced by
Global Marketing and Student Recruitment,
Aberystwyth University 2023.



Printed on
100% recycled paper